

CAT5e HDMI LONG RANGE DISTRIBUTOR SERIES

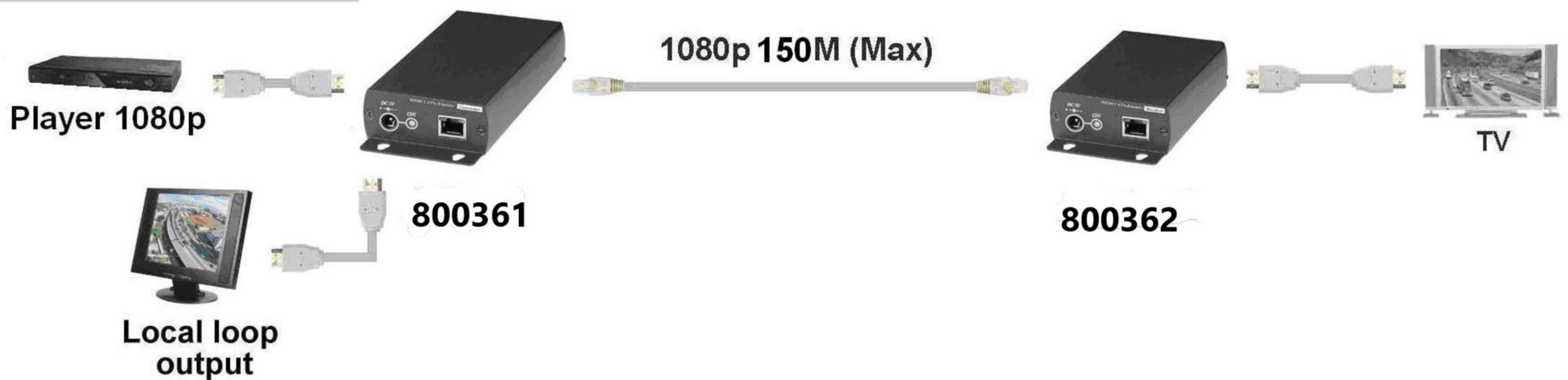
ITEM NO: HDMI 1 in 2 out Distributor over CAT5e 150M
(Over IP solution: 800361 , 800362)



HDMI 1 in 2 out Distributor over CAT5e Extender 150M

- Extend HDMI signals over one Cat5e/CAT6 cable.
- Economic HDMI over IP Extender.
- Support point to point connection, allow point to many connections via network switch.
- Dual output: 1 x HDMI loop output for local monitor, plus 1 CAT5e RJ45 output for remote unit.
- Supports resolutions up to 1080p Full HD.
- Transmission range up to 150M over CAT5e, 160M over CAT6.
- HDMI 1.3b and HDCP compliant.
- Perfect for remote machines and security monitoring systems, digital signage application.
- Optional model: SR01 signal repeater for longer distance application.

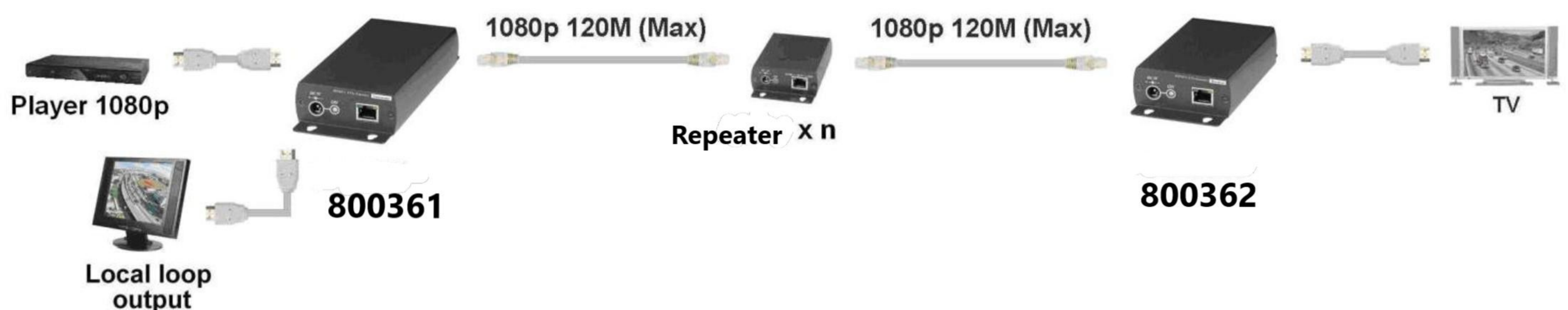
Installation View:



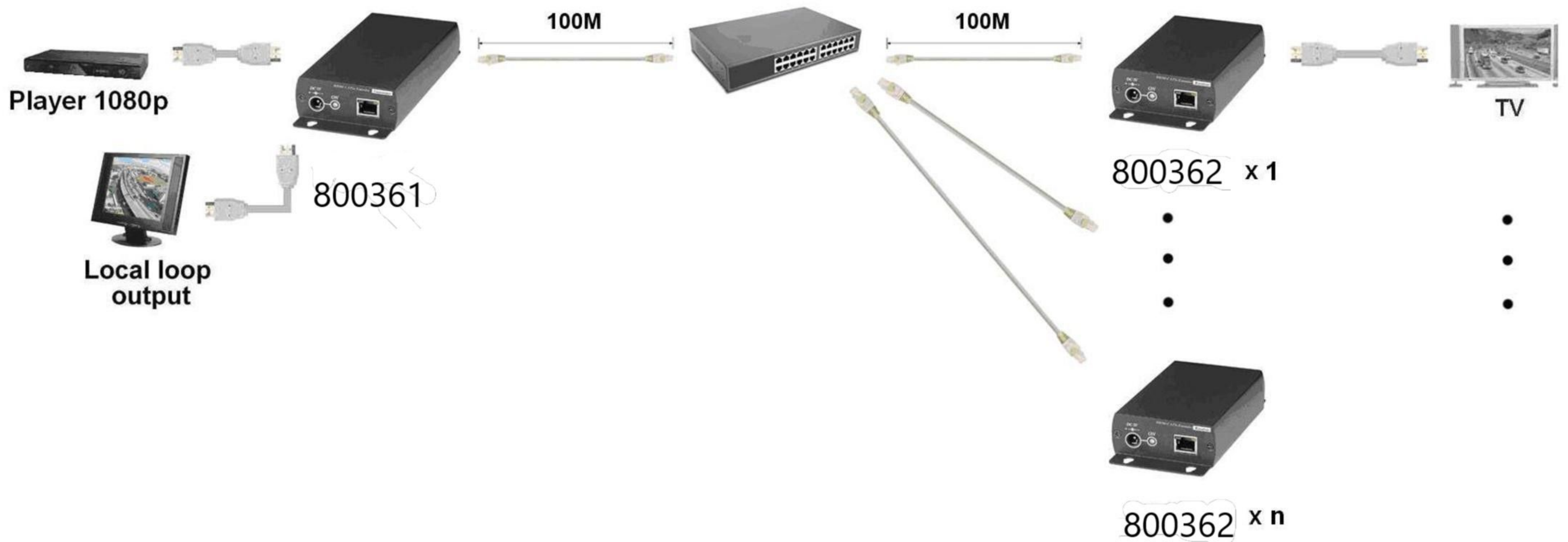
Optional Model: Signal Repeater (order separately)

- Extend data signal for an additional 120meters.
- Application for 800361 signals for extra long range transmission.
- Ability to cascade connection with multiple Repeater for long range transmission
- Built in LED status indication.
- External power required.
- Plug and play for easy installation.

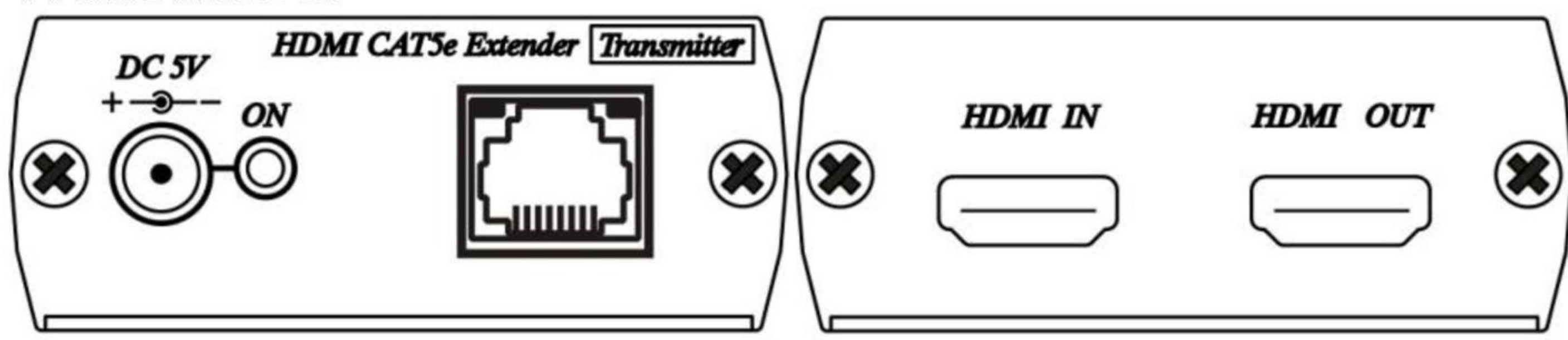
Work with CAT5e Extender:



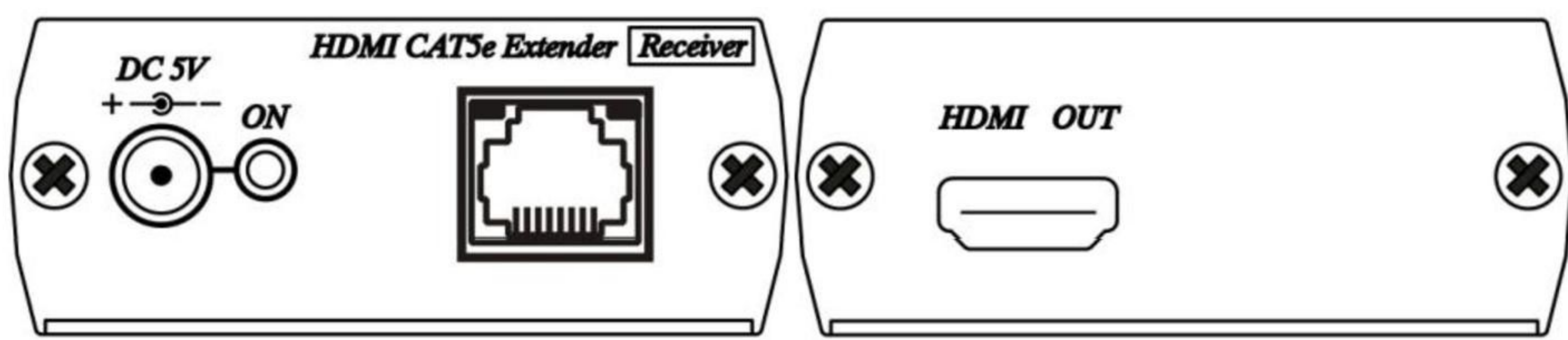
HDMI over IP Extender, support point to many connections via network switch:



Panel View: Transmitter



Receiver



LED Indication Status:

Green LED:	ON	Power on
RJ45 LED:	Orange Flash	(Data transmission)
	Green on	(linking)

Cable:

Link Cable use high quality Cat.5e UTP/STP/FTP or Cat.6 UTP cable

RJ45 Define:

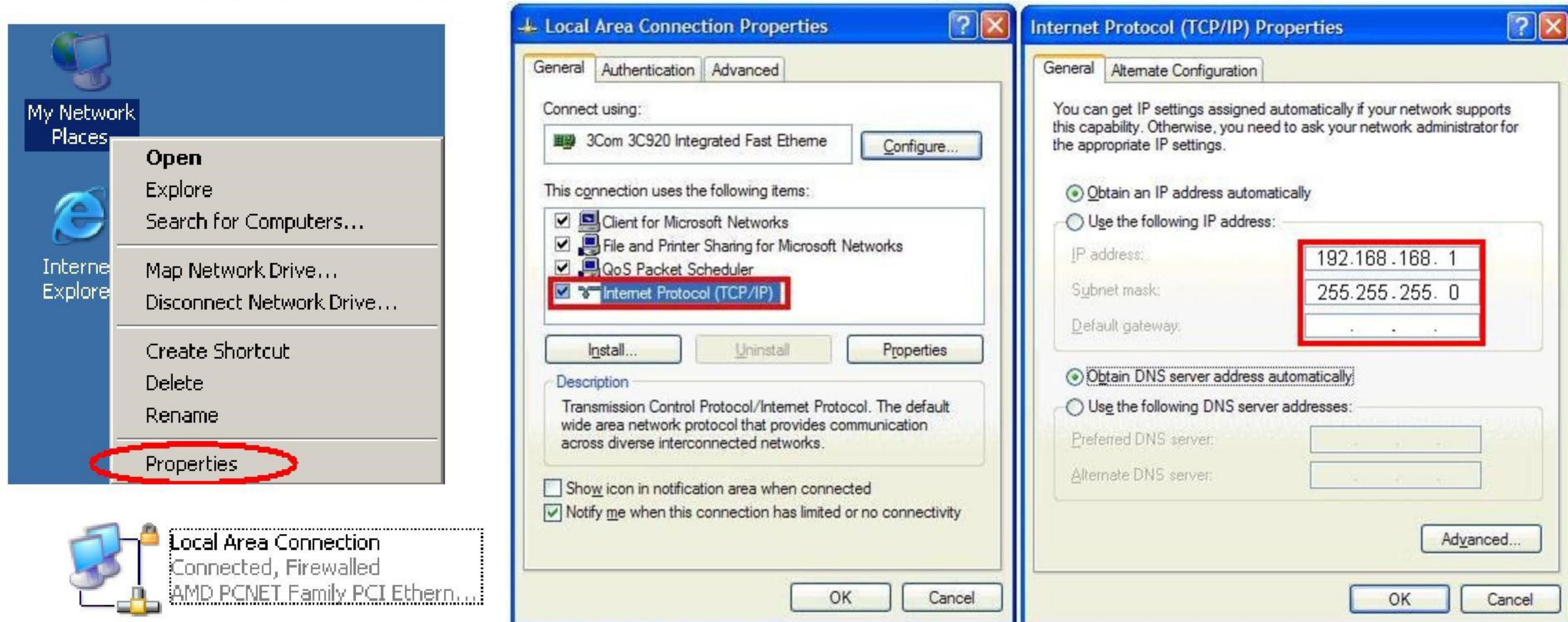
Link Cable (TIA/EIA-568-B)		
1. Orange-white		Data 1 +
2. Orange		Data 1 -
3. Green-white		Data 2 +
4. Blue		Data 3 +
5. Blue-white		Data 3 -
6. Green		Data 2 -
7. Brown-white		Data 4 +
8. Brown		Data 4 -

Computer IP Address Setting:

System default IP address is **192.168.168.55** for **800361**, **192.168.168.56** for **800362** (subnet mask 255.255.255.0), Your computer must set in same subnet mask to enter the web setup page. To change the IP address of computer please follow below step: (based on Windows XP):

Right click on "My Network Place" → "Properties" then right click on "Local Area Connection" → "Properties" then double click on "Internet Protocol (TCP/IP)" to setting as below:

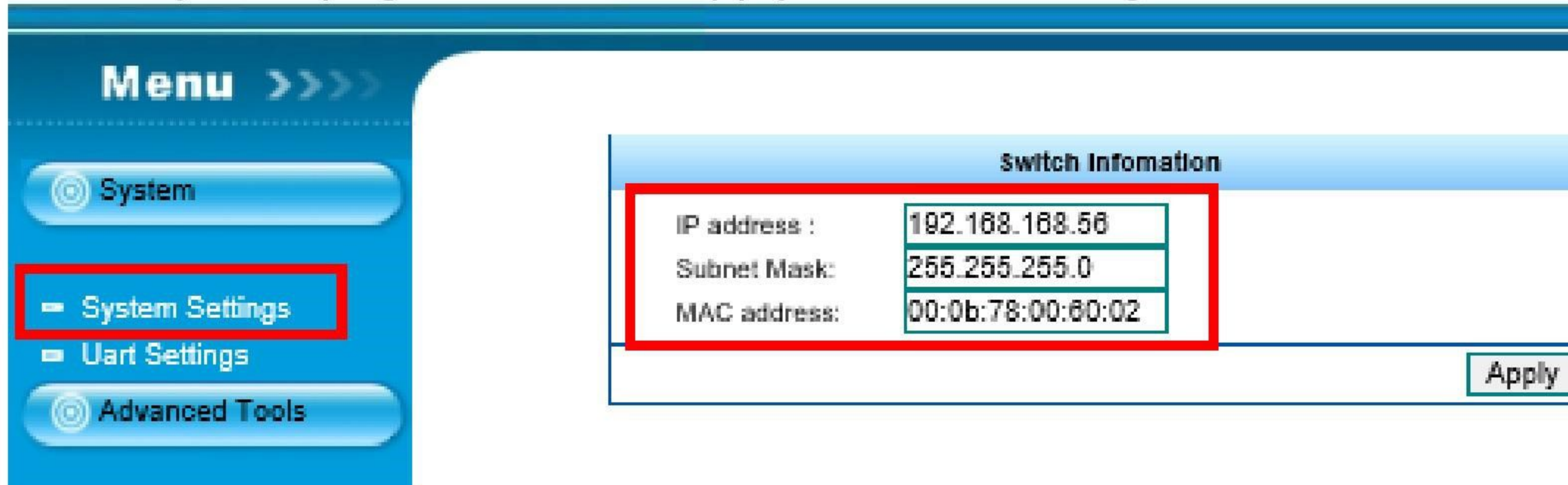
(IP address **192.168.168.1**, sub mask **255.255.255.0**)



Login in to the web:

Use CAT5e cable to connect transmitter/receiver RJ45 port to PC LAN port, enter the IP address of TX/RX in the web browser.

After login to the web, click System Settings you can change IP address, Subnet Mask, MAC address at System page, then click Apply to finish setting.



Specification:

ITEM NO.	800361	800362
Support Resolution	640x480@60Hz, 800x600@60 Hz, 1024x768@60 Hz, 720x480p@60 Hz, 720x576p@50 Hz, 1280x720p@60 Hz, 1280x720p@50 Hz, 1920x1080i@60 Hz, 1920x1080i@50 Hz, 1920x1080p@60Hz	
Transmission Distance	CAT.5e : 150M / CAT6 : 160M (Max)	
HDMI Connector	HDMI Type A x 2	HDMI Type A x 1
Link Connector	RJ45 x 1	
Power Supply	DC 5V 2A	
Power Consumption	1.2A	0.7A
Temperature	Operation:-20 to 60°C, Storage: -20 TO 85°C, Humidity: up to 95%	
Dimensions mm	67 x170 x 27	67 x 130 x 27
Weight g	250	195

