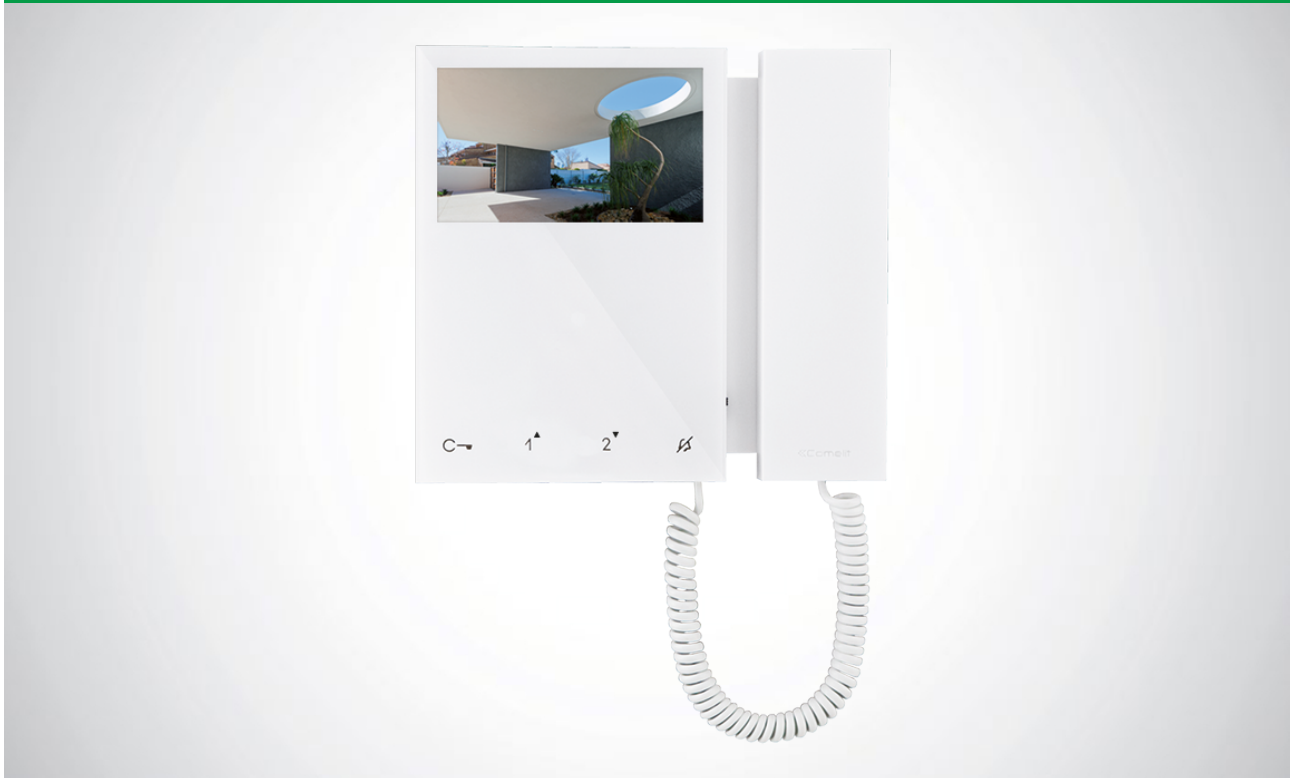




6702W

MINI BM WHITE MONITOR, VIP



Colour monitor with handset and audio induction loop for VIP system. 4.3" 16/9 colour screen. Resolution 480x272 pixels. Allows backlighting intensity, audio volume and ringtone volume adjustment. Equipped as standard with 4 soft touch buttons: lock-release with door open indicator LED, privacy function button with indicator LED, 2 programmable buttons. With 3 inputs that can be programmed for various functions. The optional accessory Art. 6735W has a further 5 programmable buttons (in addition to the lock-release and privacy keys) which can also be used for menu navigation. Can also be used in standard PoE systems. The ringtone and the video memory function with absent message can be customised. H.264 video format. Dimensions: 175x160x22 mm

AWARDS

DESIGN
MILANO





6702W

MINI BM WHITE MONITOR, VIP

MAIN FEATURES

Audio/video system:	Yes
Wall-mounted:	Yes
Desk base-mounted:	Yes
Induction loop function:	Yes
Type of display:	LCD
Display size (inch):	
Touch screen display:	Yes
Display resolution HxV (inch):	480x272
B/W or colour display:	
Product colour:	White
Sensitive Touch technology:	Yes
Total buttons:	4
Additional buttons:	3
LED signaling (no.):	2
Led to additional signaling (no.):	1

FUNCTIONS

Actuator control function:	Yes
Self-ignition:	Yes
Switchboard call function:	Yes
Priority calls:	Yes
Intercom function:	Yes
Selective intercom call:	Yes
Call to multiple addresses:	Yes
Call to group addresses:	Yes
Call forwarding:	Yes
Privacy function:	Yes
Doctor:	Yes
Floor door call function:	Yes
Electronic bell:	Yes
Customisable ringtone:	Yes
Alarm function:	Yes
Receiving text messages:	Yes
Images reception:	Yes
Sending emails on event:	Yes

HARDWARE SPECIFICATIONS

Visual signalling:	Yes
--------------------	-----



6702W

MINI BM WHITE MONITOR, VIP

HARDWARE SPECIFICATIONS

Acoustic signalling:	Yes
Ethernet ports:	Yes
Type of finish:	Plastic

SETTINGS

Loudspeaker volume control:	Yes
Ringtone volume control:	Yes
Backlighting display:	Yes

GENERAL DATA

Product height (inch):	6.3
Product width (inch):	6.89
Product depth (inch):	0.87

COMPATIBILITY

Vip system:	Yes
-------------	-----

TECHNICAL CHARACTERISTICS

Power supply voltage (VDC):	÷ 56
POE power supply:	Yes
Absorption in stand-by (mA):	43
Absorption during call (mA):	55
Absorption during communication (mA):	86
IP protection rating:	IP30
Operating temperature (°F):	41 ÷ 104
RH max operating humidity (%):	25 ÷ 75
Video encoding:	H.264
Product weight (oz):	1.43
Clamps:	IN1 IN2 IN3 GND
Network connection:	RJ45



6702W

MINI BM WHITE MONITOR, VIP

ACCESSORIES



6710

BACKPLATE AND DISTRIBUTION TERMINAL FOR MINI MONITOR

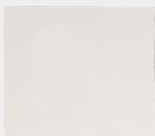
Wall-mounting or residential series box backplate for MINI monitor, /BM versions with handset featuring magnetic induction for hearing aid wearers. Also includes riser distribution terminal Art. 1214/2C. Dimensions 145x100x4 mm.



6711W

ADAPTER PLAQUE FOR MINI MONITOR W/ HANDSET. WHITE.

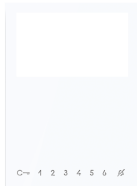
Mounting accessory for Mini Monitor when replacing Magis or Genius door entry monitors. Complete with backplate art. 6710 and distribution terminal art. 1214/2C. White. Dimensions: 300x260x4 mm.



6711WS

MINI HANDSET SMALL ADAPTER PLAQUE

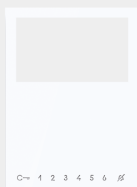
Mounting accessory for Mini Monitor when replacing Magis or Genius door entry monitors. White. Dimensions: 230x220x4 mm.



6733W

ADDITIONAL BUTTONS KIT FOR MINI MONITOR, WHITE

Accessory for transforming MINI monitors Art 6700W-/BM and 6701W-/BM into versions with 8 buttons. Includes an 8-button faceplate and an electronic module for activating the buttons, which can be installed quickly without opening up the monitor.



6735W

Add.butt. kit for Mini monitor w/handset, VIP

Accessory for conversion of Mini VIP series monitors Art 6702W into 7-button versions. Includes a 7-button faceplate and an electronic module for button activation, which can be installed quickly without the need to open the monitor casing.



6719W

HANDS-FREE MINI VIDEO SBT EXTERNAL CABLE ACCESS.

Wall support bracket for Mini monitor with handset allowing thru-routing of external cables. Dimensions: 164x149.60x19mm.



6702W

MINI BM WHITE MONITOR, VIP

ACCESSORIES

6719V

MINI VIDEO VIP W/HANDSET EXTERNAL CABLE ACCESS.

Wall bracket for ViP system Mini monitor with handset; allows through-routing of external cables.

6712V

Desk base for Mini ViP monitor with handset

Desk base for desktop conversion of ViP system Mini monitor with handset. Complete with 1 x 2 metre cable with RJ45 connector to connect monitor terminals to the coupler or residential series socket.

6712

DESK BASE FOR MINI MONITOR

Desk base converts the MINI monitor into a desktop version. Complete with 1 x 2 m labelled RJ45 cable for connecting the monitor terminals to the clasp or to a residential series jack. Dimensions: 145x190x120 mm.



6712A

Desk base for Mini Sbc monitor with handset

Desk base installation accessory for Mini monitor with handset in Simplebus Top system.

