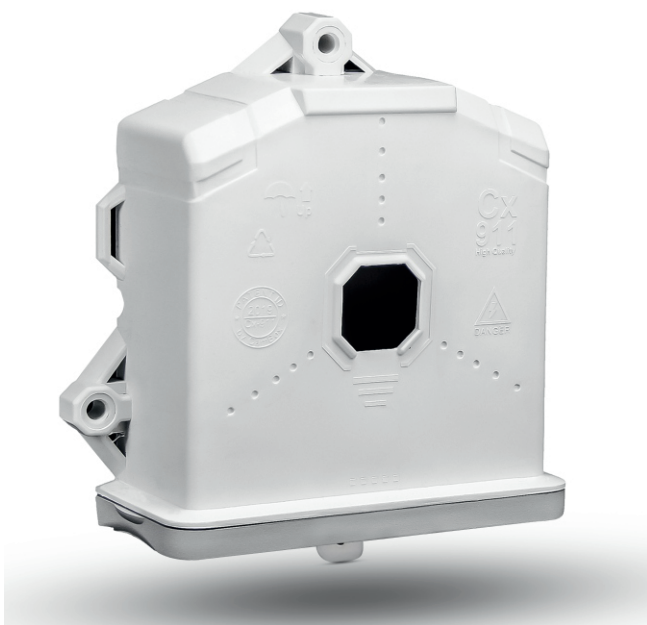


CamBox Cx-911 Junction Box

CamBox Camera and Wi-Fi Termination Box
Hig Quality Mono Body



- * Highly Durable Mono Body
- * Ample Internal Space
- * Faster Mounting System
- * Multi-way Mounting System
for poles, walls, ceiling, screw, steel clamp, metric screws
- * High Quality Composite Material
- * Reduces time of intervention.
No need to remove the camera to
for repairs and maintenance

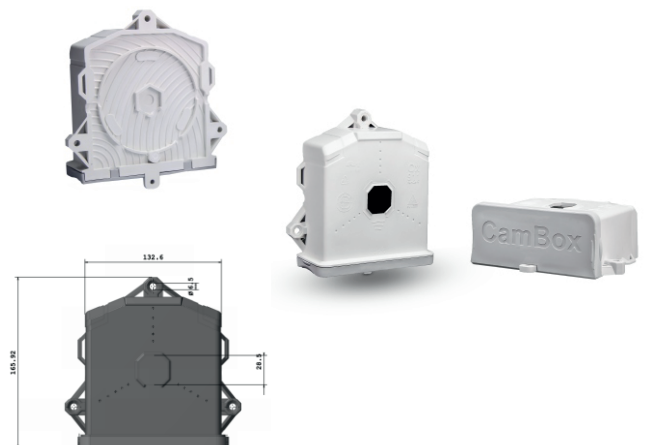
Technical Data

165mm x 132mm x 55mm

Weight : 185-235gr (depending on colour)

Easy to mount to all the surfaces

Colour: White or any other custom colour



Video Introduction

