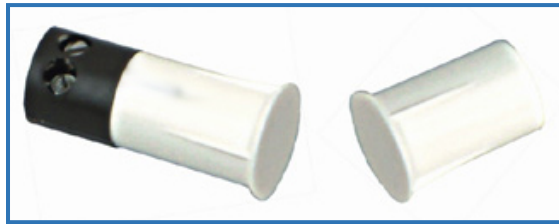


Recessed mounted magnetic switch

Ideal for wooden door/ window

200029 Magnetic Contact is designed with a flat side on the surface of the contact,



which allows a flush fit on narrow surfaces. This contact is recommended for use with casement windows, awning windows, and other areas where the contact must recess and fit into a narrow surface.

Housing : ABS material

Output : NC

Gap : 15-25mm

Current : 0.5A

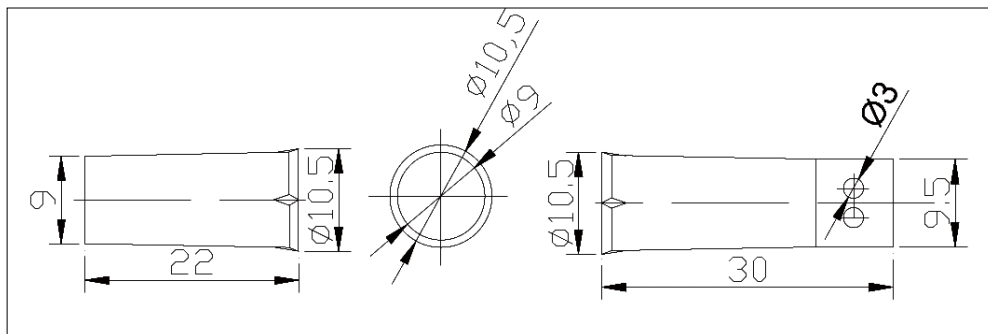
Power : 100V/10W

M : 200mΩ

Color : white

Screw terminal connect flush mounted

Certificates: FCC, CE, ROHS



VandalVeto®