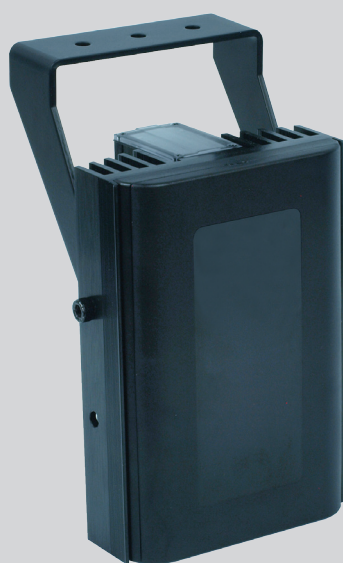


# Clarius®



## Large IR LED Illuminator

The **Clarius® Plus** range of high performance Infra-Red LED illuminators are designed to provide class leading performance, long life and ultra low maintenance.

Incorporating the latest surface mount **Dual Core®** LED's with enhanced optical output and outstanding reliability, they deliver excellent night-time images.

Each unit is fitted with integrated control circuitry to carefully control LED output, delivering consistent illumination and projected working life in excess of 10 years.

The **Clarius® Plus** range of illuminators includes a new interchangeable lens diffuser system; which allows the user to quickly and easily alter the angle of illumination. Elliptical beam profiles allow more light to be delivered where it is needed, allowing both longer distances and minimising light wastage. The system also helps to prevent overexposure of foreground objects.

As standard the illuminator includes interchangeable lensing to deliver 10° circular, 30°, 60° and 95° elliptical beam profiles.

Installation is quick and easy, requiring only 12-32V DC / 24V AC +/- 10%.

### PRODUCT CODES

**IL-8** Large Clarius PLUS Infra-Red Illuminator 850nm

**IL-9** Large Clarius PLUS Infra-Red Illuminator 940nm

### FEATURES

Latest <b>Dual Core®</b> SMT LED technology
Distances up to 228m (748')
Angle 10°, 30°, 60° & 95°
Elliptical beam profiles
850nm or 940nm wavelengths
Low power consumption (39W)
Long life
5 year warranty
IP66 weather proof rating
Built-in photocell IR on/off photocell following contact
Photocell following contact
Telemetry input for remote switching
12-32V DC / 24V AC +/- 10%
<b>CleanLITE®</b> self cleaning lens coating technology
High quality anodised aluminium heatsink
Pressure equalisation vent

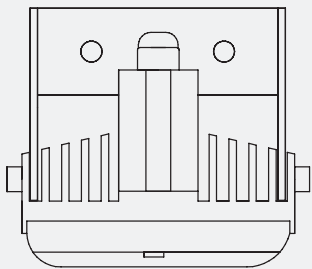
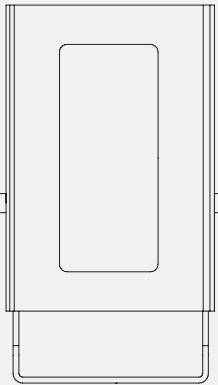
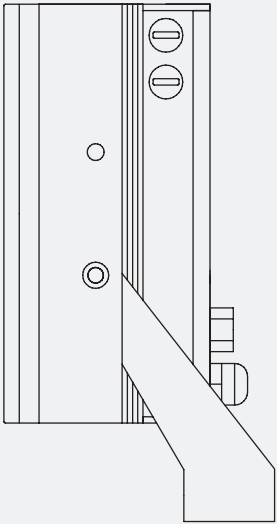


## Recommended PSU ALT-60-24



Product Code	Wavelength	Angle	Distance		FOV	
IL-8	850nm	10° - Circular	228m	748'	40m	131'
		30° - Elliptical	114m	374'	61m	201'
		60° - Elliptical	73m	238'	84m	275'
		95° - Elliptical	36m	119'	79m	260'
IL-9	940nm	10° - Circular	140m	459'	24m	80'
		30° - Elliptical	79m	260'	42m	139'
		60° - Elliptical	49m	160'	56m	185'
		95° - Elliptical	24m	80'	53m	175'

## TECHNICAL SPECIFICATIONS



### GENERAL

#### Electronics

High Efficiency Surface Mount High Power **Dual Core**® LED's with Advanced Current Limited Integral Control Circuitry

#### Construction Front Window

Robust High Quality Aluminium Extrusion  
Polycarbonate High Transmission Protective (Vandal Proof) IR Filter with **CleanLITE**® Technology

#### Finish Power Cable

Black Anodised  
3m (9ft) including Photocell Following Contact & Remote Telemetry Input

#### Pressure Equalisation Vent

Prevents Thermal Expansion & Pressure Cycling

#### Photocell

Adjustable 20 -70 Lux

#### Illumination

Adjustable 10% - 100%

#### Operating Temperature

-50° to 50°C (-58° to 122°F)

#### Weight

1.35Kg (3lbs)

#### Mount

Powder Coated Stainless Steel Wall Mount

#### Dimensions

161 x 110 x 78mm (6.34" x 4.33" x 3.07")

### ELECTRICAL

#### Input Voltage

12-32V DC or 24V AC +/- 10%

#### Input Current

1.6A at 24V AC

#### Consumption

39W

### WAVELENGTH

#### Standard

850nm (Semi Covert). Faint Red Glow Only

#### Optional

940nm (Covert). Minimal Visible Glow

### CERTIFICATIONS

#### WEEE

Waste Electrical & Electronic Equipment European Directive 202/96/EC

#### IP

IP66 In Accordance With EN60529;1992

#### RoHS

Restriction Of Hazardous Substance European Directive 202/95/EC

#### Environmental IEC/EN 60529

IP66

#### CE-EMC

EN 61547  
EN 55015  
EN 62493  
EN 50130-4  
EN61000, FCC Part 15. 107

(Lighting-Immunity)  
(Lighting-Emission)  
(Lighting-EMF)  
(Alarm-EMC)  
15. 108 Class B

#### IEC/EN 62262 EN 50130-5

IK09  
(Alarm-environmental)

#### N2580, EN 50581

(RoHS), REACH

#### CE-LVD

EN 60598-1  
EN 60598-2-1  
EN 62368-1 / EN 60950-22

(Luminaires-General)  
(Luminaires)

#### USA cULus

UL 2108  
UL 8750  
Class B

#### FCC

#### AUS

RCM (AS/NZS CISPR 22 Class B)

#### Safety

EN 62471  
EN60598:2004  
EN60825-1

(LED safety)  
Electrical Safety  
Laser Eye Safety

