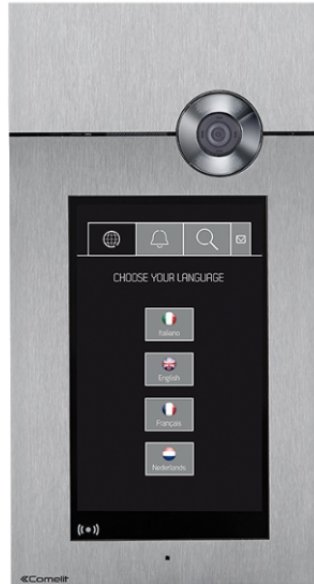




3454HD

316 series Touch HD A/V entrance panel, ViP.



Stainless steel flush-mounted entrance panel (fitted level with the wall) with 8" capacitive touch-screen featuring high visibility and impact-proof glass. IK08 certification. Operation with configurable graphics (list of names with search, virtual static buttons up to 10 users, alphabetised directory, number code up to 8 digits). Allows customisation of the virtual buttons and viewing of general apartment block messages. Fully configurable via ViP Manager software. Fitted with RFID reader for local door lock control, an additional relay for various uses and proximity and brightness sensors for optimal operational management. Complete with H.264 compatible audio/video unit art. 4682HD and flush-mounted box with concealed fixing screws. Plate dimensions (WxHxD): 182x342x3 mm.

AWARDS

DESIGN
MILANO



Merlion
Awards



3454HD

316 series Touch HD A/V entrance panel, ViP.

GENERAL DATA

Type	Monoblock
Product height (mm)	342
Product width (mm)	182
Product depth (mm)	45
Product weight (g)	4000
Product colour	Steel
Material	Stainless steel AISI 316
Flush-mounted	Yes
Wall-mounted	Yes, with a dedicated accessory

COMPATIBLE SYSTEMS

Compatible audio and audio/video units	Art.4682HD
ViP	Yes

DISPLAY FEATURES

Display type	Graphic LCD
Size (inches) (")	8
Touch screen	Capacitive
Resolution (pixel)	800x480

AUDIO FEATURES

Microphone	9.7 (∅), omnidirectional
Loudspeaker	50mm (∅), 8 Ohm, 0.2W
Technologies implemented	Echo canceling

CAMERA FEATURES

Camera	Colours
Sensor type	1/2.9" CMOS
Lens (mm)	2.8
Angle of view (H x V - °)	83 x 67



3454HD

316 series Touch HD A/V entrance panel, ViP.

CAMERA FEATURES

Resolution (H x V - pixel)	1280 x 720
Video compression	H.264

ELECTRICAL CHARACTERISTICS

Type of power supply	External power supply
Supply voltage	33VDC
Absorption in stand-by (W)	13
Maximum absorption (W)	16

HARDWARE FEATURES

Call type	Push-buttons, Digital
Type of buttons	Capacitive
Number of push-buttons (n°)	60
Clamps	TX- TX+ RX- RX+ V- V+ RTE GND/SE- SE+ COM NC NO
Removable terminals	Yes
Number of inputs (n°)	2
Number of outputs (n°)	1
Integrated proximity reader	RFID
Communication ports	RS485
Proximity sensor	Yes
Brightness sensor	Yes

NETWORK AND COMMUNICATION PROTOCOLS

Type of LAN network	Ethernet 10 Mbit/s
IP address assignment	Auto IP, DHCP, Static

ENVIRONMENTAL AND COMPLIANCE FEATURES

IP protection degree	IP54
IK vandal-proof protection degree	IK08
Operating temperature (°C)	-25 ÷ 55



3454HD

316 series Touch HD A/V entrance panel, ViP.

ENVIRONMENTAL AND COMPLIANCE FEATURES

Operating humidity (RH max - %) (%)	25 ÷ 95
Environmental class	III
Compliance and Certifications	RoHS II - 2011/65/UE (EN 50581:2012), EMC 2014/30/UE (EN 61000-6-1:2007 , EN 61000-6-3:2007+A1:2011)

MAIN FUNCTIONS

Door opener	Yes
Number of auxiliary relays (n°)	1
Input for local door release button	Yes
Access control via proximity reader	Yes
Access control via door opener code	Yes
Visual indications of system status	Yes
Acoustic signals of system status	Yes
Speech synthesis of system status	Yes
Customizable welcome message	Yes
Customizable screensaver	Yes



3454HD

316 series Touch HD A/V entrance panel, ViP.

ACCESSORIES



3462/6 WALL HOUSING FOR TOUCH-SENSE & 5-6 BUTT. ENT. PAN. 316 SERIES

Stainless steel accessory for wall-mounted entrance panels Art. 3451, 3451/A, 3452, 3453, 3454. Dimensions 180x340x57 mm



3460/6 FLUSH-MT. BOX FOR TOUCH-SENSE & 5-6 BUTT. ENT. PAN. 316 SERIES

Flush-mounted box for 5- and 6-button ent. panels from 316 Analog series and for 316 Touch and 316 Sense series ent. panels. Dimensions: 164x323x56 mm



3458 ACCESS CONTROL ACCESSORY MODULE FOR EXTERNAL UNITS, 316

Flush-mounted 3 mm thick stainless steel plate for housing the access control module. Can be used in conjunction with all entrance panels in the 316 range. Dimensions 88x182x3 mm