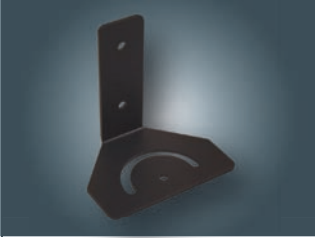




# Advanced LED Technology

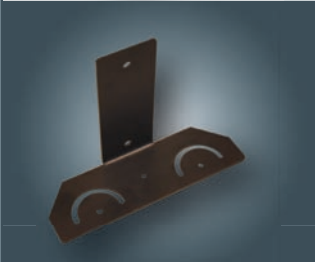
A G J D Group Company

## Clarius® Accessories



### SMB1

- 'L' wall mount bracket for single illuminator
- Compatible with all Clarius infra red & white light illuminators
- Allows up to 180 degrees rotation
- Fully adjustable (left, right, up & down)
- Stainless steel construction (black powder coated)



### DMB1

- Dual illuminator mounting bracket compatible with all Clarius infra red & white light illuminators
- Doubles the angle of illumination
- Increases illumination distance by a factor of 1.4x when using two equivalent illuminators
- Mix-and-match illuminators (angle & distance)
- Mix-and-match infra red & white light illuminators for Hybrid models
- Fully adjustable (left, right, up & down)
- Includes IP67 rated junction box
- Stainless steel construction (black powder coated)



### TMB1

- Triple illuminator mounting bracket compatible with all Clarius infra red & white light illuminators
- Triples the angle of illumination
- Increases illumination distance by a factor of 1.7x when using three equivalent illuminators
- Mix-and-match illuminators (angle & distance)
- Mix-and-match infra red & white light illuminators for Hybrid models
- Fully adjustable (left, right, up & down)
- Includes IP67 rated junction box
- Stainless steel construction (black powder coated)



### CMB1

- Camera/Tripod mounting bracket: Enables Clarius illuminators to be mounted to a standard camera tripod (1/4 UNC thread)
- Stainless steel construction (black powder coated)



### PMB1

- Pole mounting bracket compatible with all Clarius infra red & white light illuminators including SMB1, DMB1 and TMB1
- Supplied with straps to fit 7.5 to 20cm diameter pole
- Stainless steel construction



### PSU1

- 24V DC universal input AC switch mode power supply for Clarius illuminators
- IP67 rated, rugged aluminium enclosure suitable for indoor and outdoor applications
- Includes IP67 rated in line connector

