

## SL-220 / SL- 220S / SL-220T / SL-200CX Series

### SL-220

With lock status indicator and door position  
Detection output (N.O/N.C)

### SL-220S

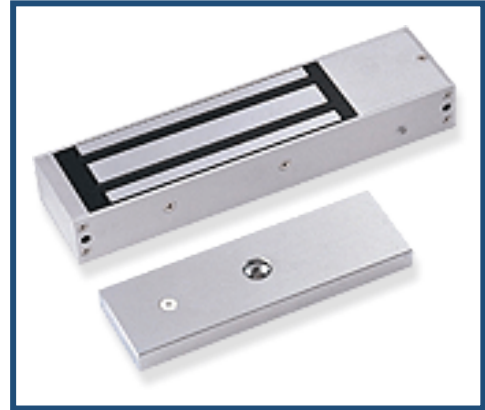
Without le indicator

### SL-220T

With delay and door open push button  
Function (stand-alone and do not need  
To connect with access control unit)

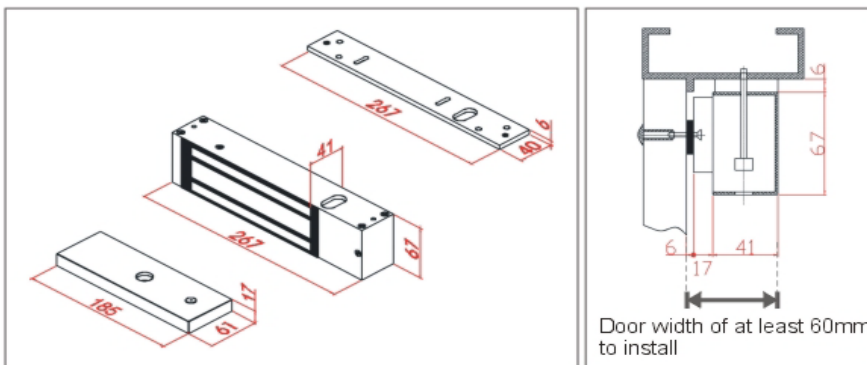
### SL-220CX

Armature with safety strap for electromagnetic  
Lock



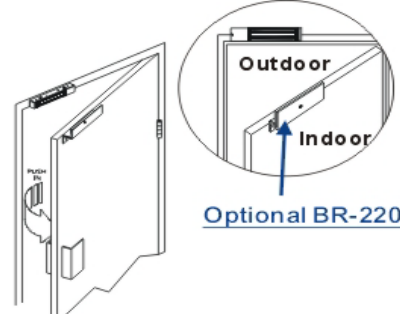
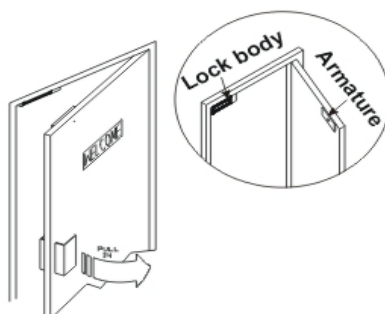
SL-220CX

- Holding force : 500kg (1200lbs)
- All materials used are fireproof
- Fail-safe (power to lock) electric lock suitable for fire exit
- Automatic demagnetizer function
- Great efficiency with low consumption of current
- Optional bracket available to install
- Operation temp. 0°~ 90°C
- Humidity : 85%Rh max.
- Dimension: Body : 267(L)x67(W)x40(D)mm  
Armature : 187(L)x60(W)x16(D)mm
- Weight : 49000g
- Certification: CE



[Out-swing door]

[In-swing door]



# VandalVeto®