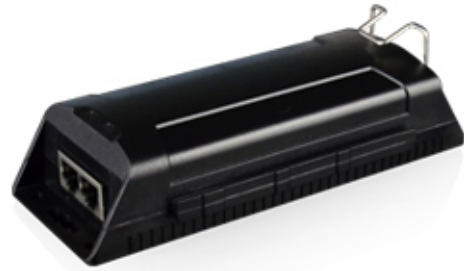
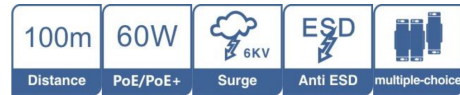


700554 is a single-port PoE injector with one Ethernet port, One PoE output port and one AC input power port.

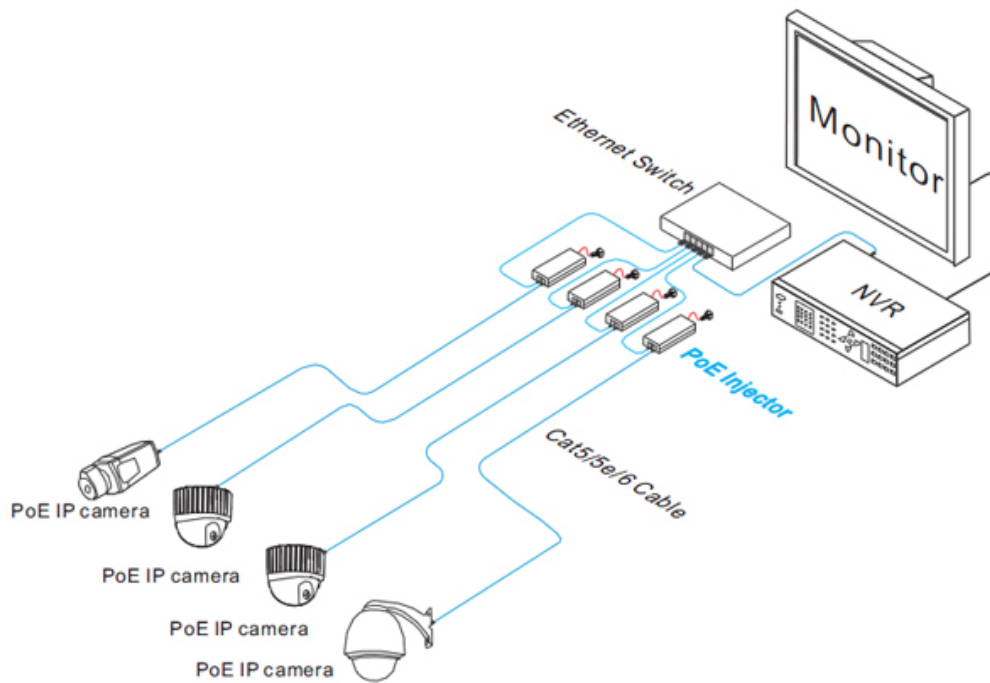
It supports end-span PoE and the output power consumption is up to 60W;

It features:10/100M/1000Mbps network 100m transmission distance,6KV lightning protection industrial-level chip, and patent alert.

it's an excellent choice for power supply and network transmission on PTZ cameras, all-in-one PC, digital display system.



Interface	Input Voltage	AC100V - AC24V
	Data Input	1XRJ45
	PoE Output	1XRJ45
PoE	PoE power supply Type	End-span/Mid-span
	PoE Power Output	DC 54v/60watts
	Output ripple	5%
	Power Pin assignment	Pair1:1/2(+),3/6(-) Pair 2:4/5(-),7/8(+)
	Communication port	1XRJ45 Input
Ethernet Port	Transmission Rate	10/100/1000Mbps
	Transmission Medium	Cat5/5e/6 cable
	Distance	100m (Max.)
Status	Power Led	1 (Red)
	PoE Led	1 (Orange)
Protection	Surge Protection	PoE power : 1 KV (Differential mode) 2 KV (Common) Mode 1.2/5us, 8/20us
		Ethernet : 2KV (Differential mode), 6KV(Common mode) 10/7000us
	ESD	1a Contact Discharge Level 3ES
		1b Air Discharge Level 3 Per : IEC61000-4-2
Environment	Working Temp.	-10 °C 55 °C
	Storage Temp.	-40 °C 85°C
	Humidity (non condensing)	0 - 90%
Mechanics	Dimensions	L)x64(W)x60(H) mm(160
	Material	ABS plastics
	Color	Black
	Weight	200g



VandalVeto[®]