



SPECIFICATIONS

Cells Per Unit	6
Voltage Per Unit	12
Capacity	26Ah@20hr-rate to 1.75V per cell@25°C
Weight	Approx. 6.5kg
Max. Discharge Current	300A (5sec)
Internal Resistance	Approx. 8.5mΩ
Operating Temperature Range	Discharge: -20°C~50°C Charge: -20°C~50°C Storage: -20°C~50°C
Normal Operating Temperature Range	25°C±5°C
Float charging Voltage	13.50 to 13.80V DC/unit Average at 25°C
Max. Charging Current	7.2A
Equalization and Cycle service	14.70 to 15.00V DC/unit Average at 25°C
Self Discharge	The batteries can be stored for more than 6 months at 25°C. Please charge batteries before using. For high temperature, the time interval will be shorter.
Terminal	T3 / T10
Container Material	ABS(UL94-HB) Flammability resistance of UL94-V0 is available on request.

APPLICATION

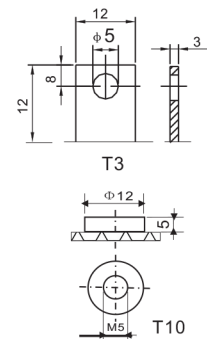
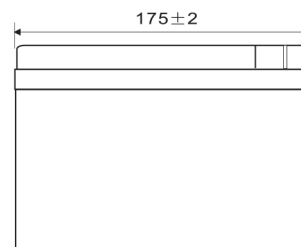
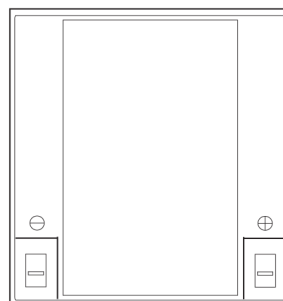
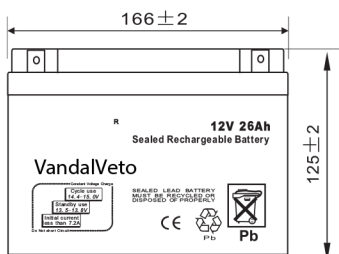
- Uninterruptable Power Supply (UPS)
- Electric Power System (EPS)
- Emergency backup power supply
- Emergency light
- Railway signal
- Aircraft signal
- Alarm and security system
- Electronic apparatus and equipment
- Communication power supply
- DC power supply
- Auto control system



ISO9001

DIMENSIONS

Unit: mm



Constant Current Discharge Characteristics Unit:A(25°C,77°F)

F.V/Time	5min	10min	15min	30min	45min	1h	3h	5h	10h	20h
1.60V/cell	83.45	57.35	41.38	25.00	18.30	14.90	6.08	4.18	2.26	1.23
1.65V/cell	80.03	51.95	40.49	24.56	18.09	14.81	6.04	4.15	2.24	1.22
1.70V/cell	72.68	50.14	39.91	24.38	17.89	14.74	6.02	4.11	2.23	1.21
1.75V/cell	65.70	46.17	38.78	24.18	17.31	14.57	6.00	4.10	2.19	1.20
1.80V/cell	59.61	42.89	35.98	22.74	17.13	14.43	5.80	3.94	2.13	1.10

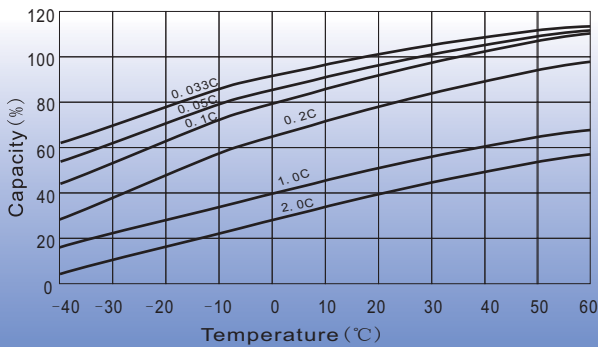
Constant Power Discharge Characteristics Unit:W(25°C,77°F)

F.V/Time	5min	10min	15min	30min	45min	1h	3h	5h	10h	20h
1.60V/cell	137.48	94.80	74.69	47.40	35.74	29.45	12.14	7.97	4.51	2.43
1.65V/cell	132.08	94.22	74.21	45.96	35.43	29.34	11.97	7.87	4.48	2.41
1.70V/cell	123.53	91.93	72.78	45.01	34.47	28.73	11.90	7.80	4.41	2.39
1.75V/cell	114.57	86.18	67.99	42.61	34.17	28.49	11.73	7.70	4.34	2.36
1.80V/cell	103.42	80.44	64.16	42.13	33.21	27.77	11.49	7.63	4.28	2.15

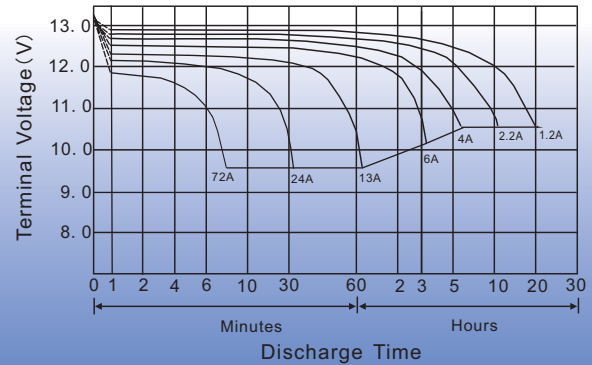
All mentioned values are average values.

#200111 12V26Ah

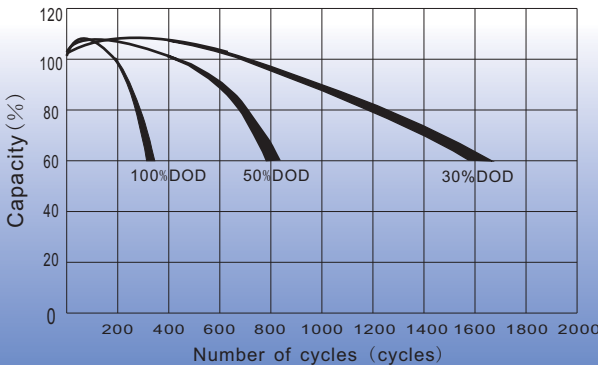
TEMPERATURE EFFECTS CURVE



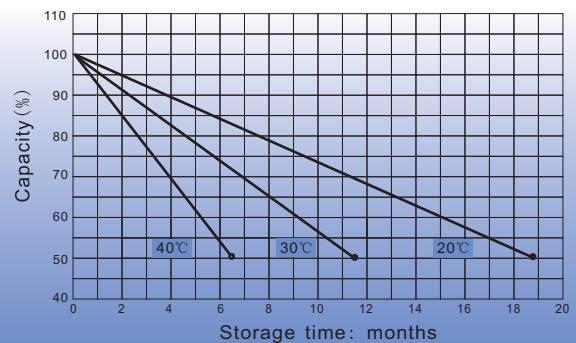
DISCHARGE TIME VS. DISCHARGE CURRENT (25°C)



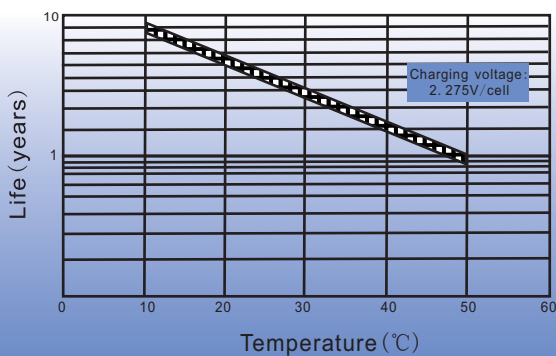
LIFE CHARACTERISTICS OF CYCLIC USE



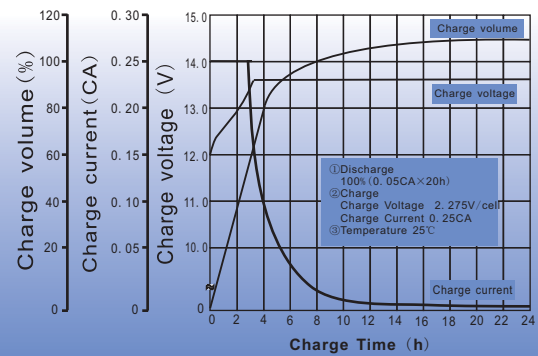
SELF-DISCHARGE CHARACTERISTIC



EFFECT OF TEMPERATURE ON LONG TERM FLOAT LIFE



CHARGE CHARACTERISTIC CURVE FOR STANDBY USE



Charging Procedures

Application	Charge Voltage (V/cell)			Max. Charge Current
	Temperature	Set Point	Allow able Range	
Cycle Use	25°C	2.475	2.45~2.50	0.3C
Standby Use	25°C	2.275	2.25~2.30	

Charge the batteries at least once every 6 months, if they are stored at 25°C.

Charging Method

Constant Voltage	14.7~15.0V, 5~11h, Max. Current 0.3CA
Constant Current	0.1CA×5h
Fast	0.3CA×1.7h

Version 1.0

Discharge Current VS. Discharge Voltage

Final Discharge Voltage V/cell	1.75	1.7	1.6	1.3
Discharge Current(A)	0.2C > (A)	0.2C < (A)	0.5C < (A)	1.0C < (A)

אגבר אלקטרוניקה 0002 בע"מ

רח' כורזין 5, גבעתיים 5358305
 טל: 03-5711450 פקס: 03-5713004
www.egber.com egber@egber.com

